

Technical sheet :

# **220 TJ+ ST5**

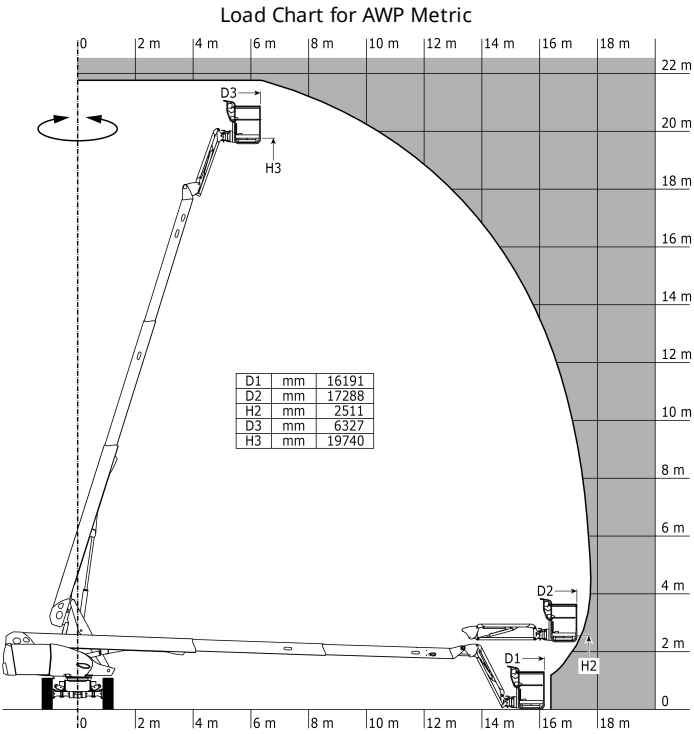
---



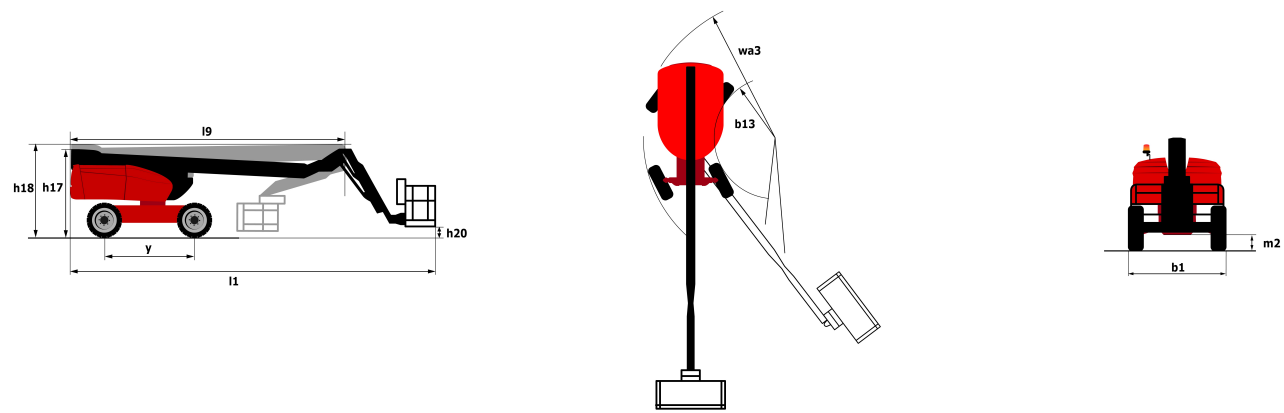
Capacities		Metric
Working height	h21	21.74 m
Platform height	h7	19.74 m
Max. outreach	r1	17.79 m
Pendular arm rotation (top / bottom)		+70 ° / -63 °
Platform capacity	Q	400 kg
Turret rotation		360 °
Platform rotation (right / left)		90 ° / 90 °
Number of people (inside / outside)		3 / 3
Weight and dimensions		
Platform weight*		13600 kg
Platform dimensions (length x width)	lp / ep	2.3 m x 0.9 m
Overall width	b1	2.48 m
Overall length	l1	10.06 m
Overall height	h17	2.66 m
Overall length (stowed)	l9	7.35 m
Overall height (stowed)	h18	3.03 m
Floor height (access)	h20	0.39 m
Jib length	l13	2 m
Counterweight offset (turret at 90°)	a7	1.34 m
Internal turning radius (over tyres)	b13	2 m
External turning radius	Wa3	4.4 m
Ground clearance at centre of wheelbase	m2	0.44 m
Wheelbase	y	2.8 m
Performances		
Drive speed - stowed		4.9 km/h
Drive speed - raised		1 km/h
Gradeability		40 %
Permissible leveling		4 °
Wheels		
Tyres type		Solid Tyres Cured-On
Dimensions of front wheels / rear wheels		1025 x 365 mm - 1025 x 365 mm
Drive wheels (front / rear)		2 / 2
Steering wheels (front / rear)		2 / 2
Braking wheels (front / rear)		2 / 2
Engine/Battery		
Engine brand / model		Yanmar - 3TNV88C
I.C. Engine power rating / Power (kW)		37 Hp / 27.5 kW
Miscellaneous		
Ground Pressure		18.3 daN/cm²
Hydraulic Pressure		400 Bar
Hydraulic tank capacity		94 l
Fuel tank		72 l
Noise to environment (LwA)		105 dB(A)
Standards compliance		
This machine is in compliance with:		European directives: 2006/42/EC- Machinery (revised EN280:2013) - 2004/108/EC (EMC) - 2006/95/EC (Low voltage)

\*Varies according to options and standards of the country to which the machine is delivered

# Load chart



# Dimensional drawing



# Equipment

Standard
230V Predisposition
4 simultaneous movements
4 wheel drive
4 wheel steer with crab mode
Audible alarm and illuminated indicator lamp (leveling, overload, lowering)
Backup electrical pump
Basket 2,300 mm
Connected machine
Continuous turret rotation
Differential locking on rear axle
Easy fast slinging system
Electronic platform compensation
Emergency stop button in platform and on frame
Engine mounted on sliding platform
Engine with DPF
Front axle with limited slip
Fuel gauge with low level indicator
Hour meter
Integrated diagnostic assistance
LED rotating beacon
LS pump
Large color screen on turret
Leveling unlocking
Oscillating front axle
Protective cover for control panel
Remote control for transport
Stop & Go system
Turret orientation information
Optional
110 or 230V plug with differential circuit breaker
Access control keypad for easy link
Additional storage boxes
Air predisposition
Basket 2,300 mm
Battery blanket
Battery cut-off