

Easy Wagon

easy-wagon.com

EQUIPMENT

Electric:

- 1x main el. supply 380V
- 1x electric box / 7x el. socket
- 1x heater 750W, 500W
- 1x heater 400W
- 2x led line / 3x el. Fan
- 2x hand dryers
- 1x round lamp
- 2x led light above doors

Plumbing:

- 1x outgoing pipe 110
- 3x round sink $\varnothing 280$
- 4x hanging toilets
- 3x urinals

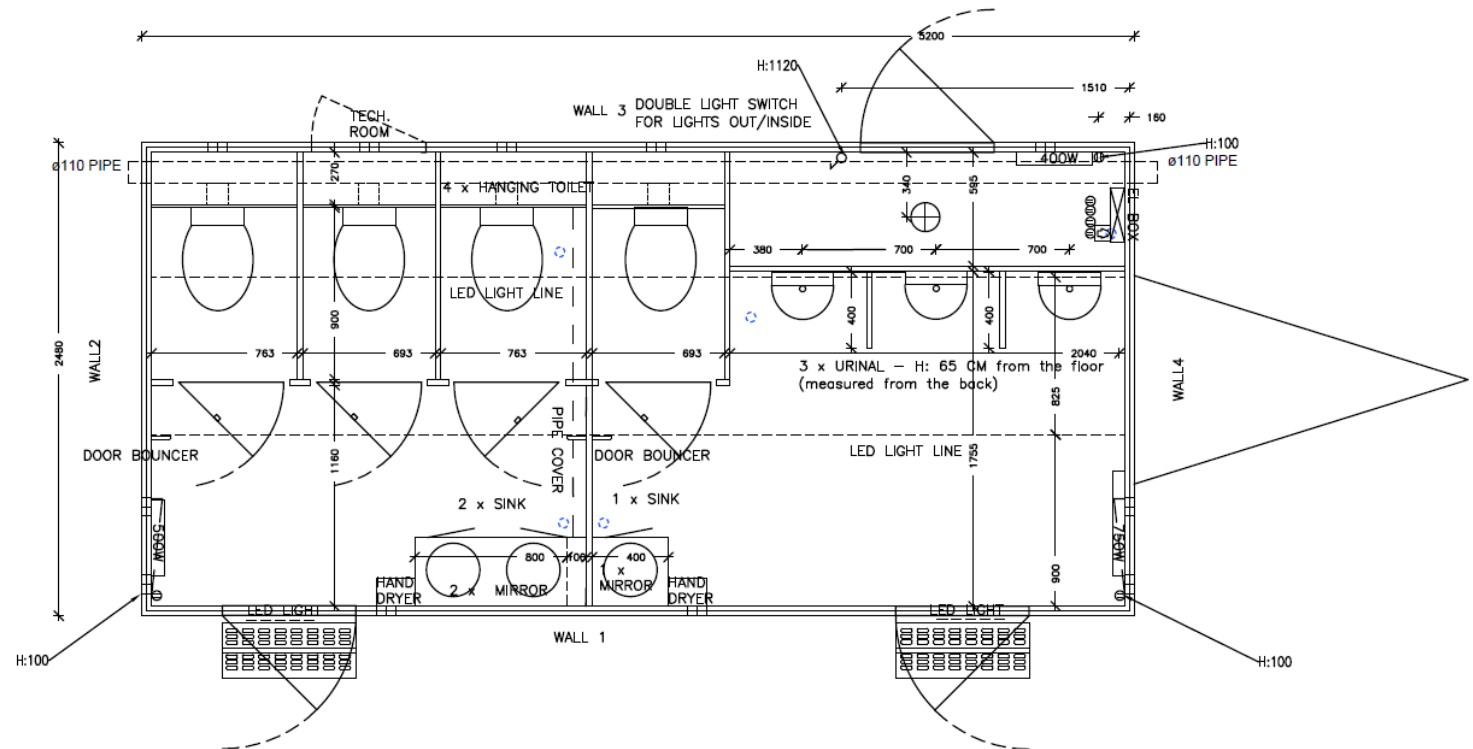
Furniture:

- 2x closet under sink

Other:

- 2x entry stairs / 1x tech. door
- 3x external door
- 3x door bouncer
- 1x pipe cover

EW 520 – Toilet wagon 3-1-3 (5200x2300)



Contact Us !

Easy Wagon DK
Nordensvej 1, 7000 Fredericia,
Danmark
Tel.: 0045 20923093
www.easywagon.dk



